



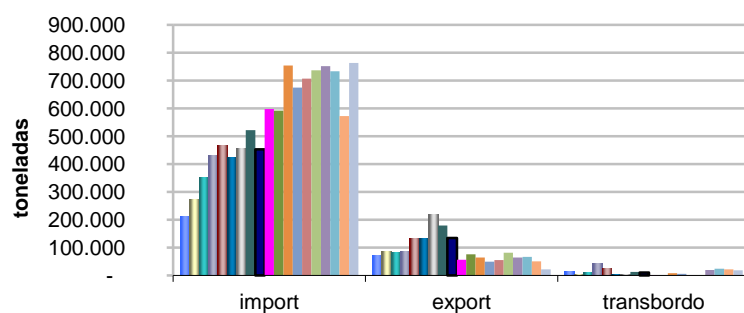
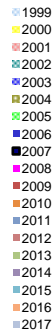
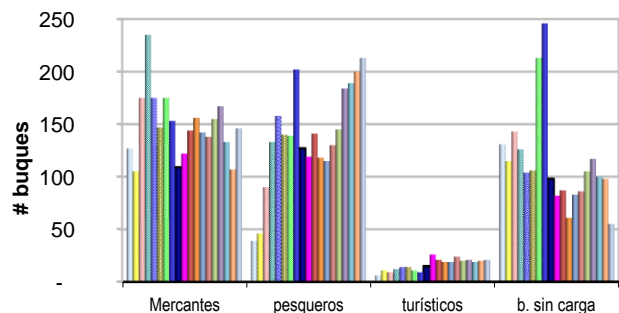
TOTAL DE BUQUES Y CARGA DEL PUERTO DE MANTA
carga anual en toneladas

BUQUES INTERNACIONALES

Año	Mercantes	pesqueros	turísticos	b. sin carga	total
1999	127	39	6	131	303
2000	105	46	11	115	277
2001	175	90	9	143	417
2002	235	133	12	126	506
2003	175	158	14	104	451
2004	147	140	14	106	407
2005	175	139	11	213	538
2006	153	202	9	246	610
2007	109	127	15	98	349
2008	122	119	26	82	349
2009	144	141	21	87	393
2010	156	118	19	61	354
2011	142	115	19	83	359
2012	138	130	24	86	378
2013	155	145	20	105	425
2014	167	184	21	117	489
2015	133	189	19	100	441
2016	107	200	20	98	425
2017	146	213	21	55	435

TOTAL CARGA (toneladas)

Año	import	export	transbordo	Total
1999	210.187	72.172	14.089	296.448
2000	271.705	86.567	1.747	360.019
2001	352.520	81.858	10.964	445.342
2002	431.245	86.473	40.824	558.542
2003	466.819	130.958	23.185	620.962
2004	424.164	133.412	3.805	561.381
2005	457.037	219.321	3.680	680.038
2006	521.217	179.429	12.625	713.271
2007	451.931	134.048	9.452	595.431
2008	597.028	56.384	132	653.544
2009	591.723	75.434	269	667.426
2010	753.791	63.748	7.226	824.765
2011	674.104	48.736	5.130	727.970
2012	706.914	54.643	116	761.673
2013	736.131	81.459	49	817.639
2014	751.809	63.869	19.619	835.297
2015	732.463	66.273	23.701	822.437
2016	571.959	50.785	21.017	643.761
2017	762.740	22.036	17.700	802.476



FUENTE: SOEP CTS TIDE ESTADÍSTICO, APM



APM, el corazón de Manta.



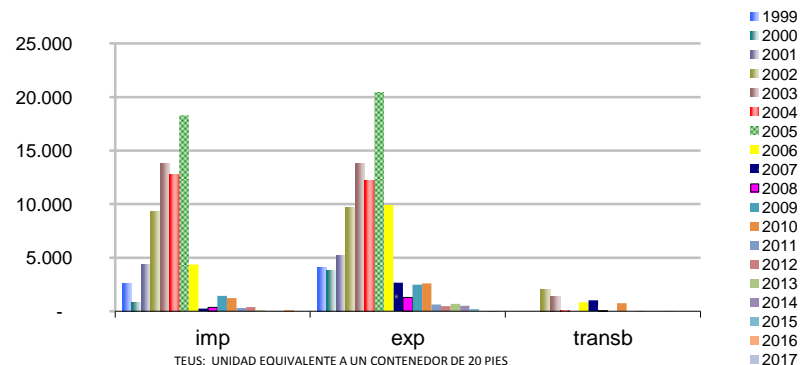
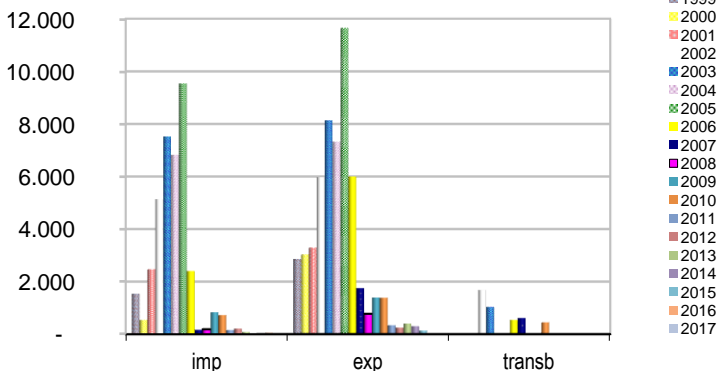
CONTENEDORES Y TEUS MOVILIZADOS POR EL PUERTO DE MANTA comparativo anual

CONTENEDORES

Año	imp	exp	transb	total
1999	1.539	2.861		4.400
2000	545	3.033		3.578
2001	2.466	3.293		5.759
2002	5.136	5.972	1.678	12.786
2003	7.524	8.136	1.041	16.701
2004	6.828	7.320	1	14.149
2005	9.535	11.643	1	21.179
2006	2.408	5.997	540	8.945
2007	164	1.750	617	2.531
2008	185	778	4	967
2009	832	1.394		2.226
2010	724	1.389	447	2.560
2011	158	340		498
2012	216	252	6	474
2013	83	401		484
2014	19	305		324
2015	24	139	4	167
2016	60	-	-	60
2017	-	1		1

TEUS

Año	imp	exp	transb	total
1999	2.560	4.091		6.651
2000	851	3.820		4.671
2001	4.321	5.160		9.481
2002	9.353	9.694	1.988	21.035
2003	13.796	13.804	1.395	28.995
2004	12.807	12.226	1	25.034
2005	18.283	20.465	1	38.749
2006	4.360	9.909	850	15.119
2007	246	2.666	1.023	3.935
2008	361	1.281	8	1.650
2009	1.434	2.490		3.924
2010	1.218	2.590	735	4.543
2011	284	629		913
2012	387	477	8	872
2013	92	691		783
2014	30	502		532
2015	24	221	6	251
2016	120	-	-	120
2017	-	21		21



FUENTE: SOEP CTS TIDE

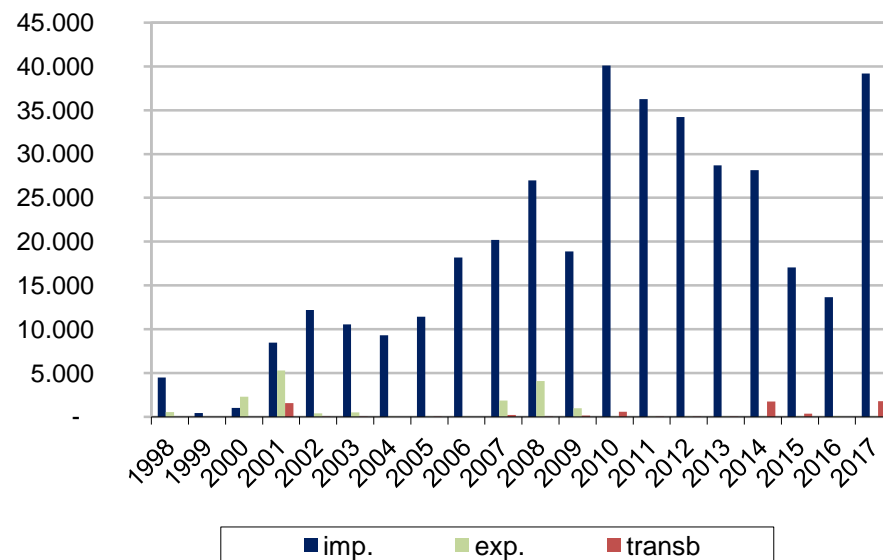
ESTADÍSTICO, APM



**Autoridad
Portuaria
de Manta**

NÚMERO DE VEHÍCULOS Y MAQUINARIAS MOVILIZADOS POR EL PUERTO DE MANTA (Automóviles, jeeps, camionetas, camiones y maquinarias)

Año	imp.	exp.	transb	TOTAL
1998	4.481	531		5.012
1999	425			425
2000	1.013	2.293		3.306
2001	8.452	5.270	1.561	15.283
2002	12.198	397	30	12.625
2003	10.562	517	1	11.080
2004	9.317	14		9.331
2005	11.432	5	1	11.438
2006	18.184	26		18.210
2007	20.182	1.871	196	22.249
2008	27.001	4.090	1	31.092
2009	18.867	984	146	19.997
2010	40.106	5	583	40.694
2011	36.284	5	8	36.297
2012	34.205	25	3	34.233
2013	28.712	6	2	28.720
2014	28.160	7	1.761	29.928
2015	17.034	9	352	17.395
2016	13.647	66	-	13.713
2017	39.177	39	1.770	40.986



FUENTE: SOEP CTS TIDE
ESTADÍSTICO, APM



Ministerio de Transporte
y obras Públicas



APM, el corazón de Manta.



TIPO DE CARGA MOVILIZADA POR EL PUERTO DE MANTA

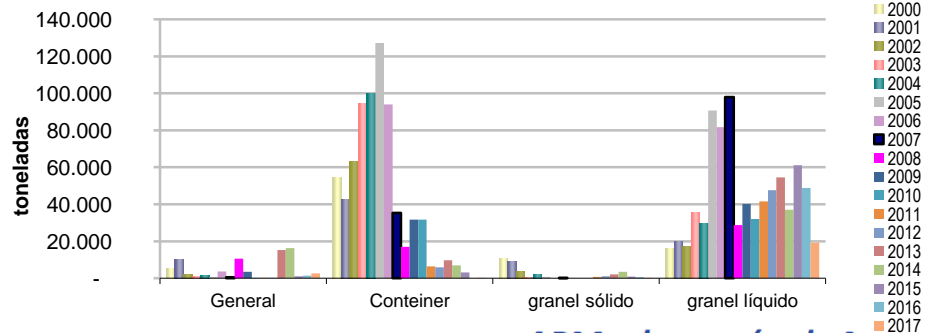
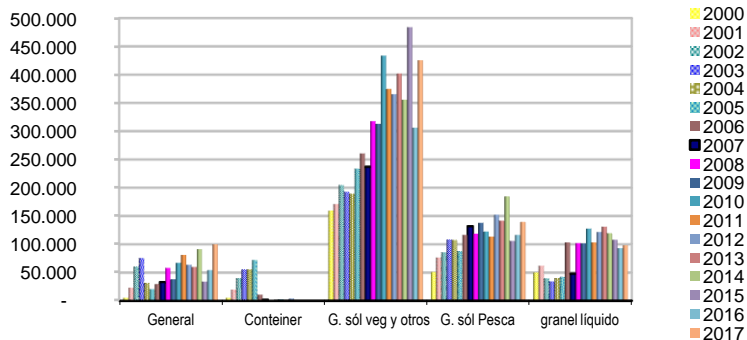
comparativo anual

EXPORTACIÓN (toneladas)

IMPORTACIÓN (toneladas)

Año	General	Container	G. sól veg y otros	G. sól Pesca	granel líquido	total
2000	5.175	5.467	159.783	51.055	50.225	271.705
2001	23.136	19.860	171.199	76.331	61.994	352.520
2002	60.627	40.178	204.695	86.018	39.727	431.245
2003	75.594	55.531	192.917	108.414	34.363	466.819
2004	31.572	55.485	189.239	107.632	40.236	424.164
2005	20.568	72.397	233.949	87.852	42.271	457.037
2006	29.497	11.040	260.679	116.443	103.558	521.217
2007	33.267	1.926	237.120	131.827	47.791	451.931
2008	58.307	447	317.674	118.704	101.896	597.028
2009	38.304	773	312.971	137.814	101.861	591.723
2010	67.299	2.971	433.686	122.324	127.511	753.791
2011	81.183	1.340	374.662	113.541	103.378	674.104
2012	63.581	3.875	365.341	152.328	121.789	706.914
2013	59.893	1.705	401.997	141.577	130.959	736.131
2014	91.590	279	355.643	184.731	119.566	751.809
2015	34.088	520	483.745	105.931	108.179	732.463
2016	54.409	1.608	306.352	116.541	93.049	571.959
2017	99.894	-	425.401	139.392	98.053	762.740
%	60	209 -	37	10 -	14 -	22

Año	General	Container	granel sólido	granel líquido	Total
2000	5.210	54.384	10.669	16.304	86.567
2001	10.309	42.585	8.924	20.040	81.858
2002	2.268	63.382	3.734	17.089	86.473
2003	1.154	94.257	63	35.484	130.958
2004	1.604	99.876	2.092	29.840	133.412
2005	692	127.248	676	90.705	219.321
2006	3.741	93.979		81.709	179.429
2007	628	35.345	149	97.926	134.048
2008	10.554	16.994		28.836	56.384
2009	3.470	31.773		40.191	75.434
2010	9	31.629		32.110	63.748
2011	13	6.412	793	41.518	48.736
2012	38	5.938	1.022	47.645	54.643
2013	15.240	9.680	2.037	54.502	81.459
2014	16.321	6.982	3.549	37.017	63.869
2015	1.074	3.167	900	61.132	66.273
2016	1.426	-	483	48.876	50.785
2017	2.666	21	111	19.238	22.036
%	33 -	100 -	46 -	20 -	23



FUENTE: SOE ESTADÍSTICO,



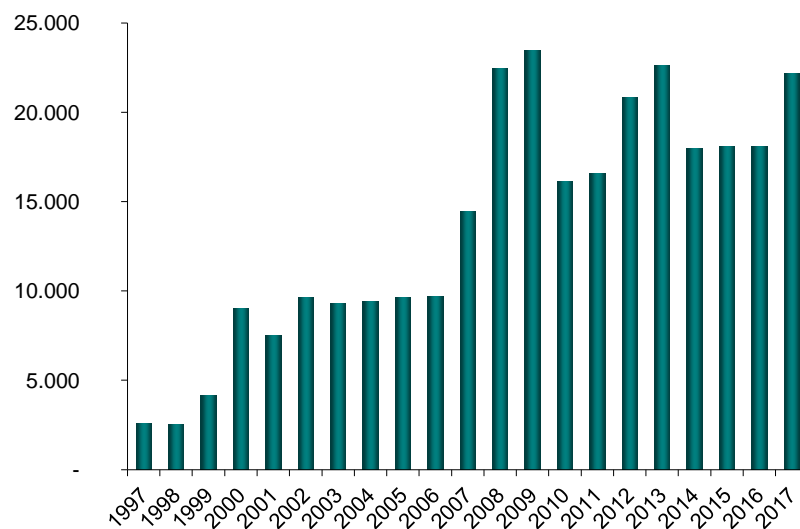
**Autoridad
Portuaria
de Manta**

Autoridad Portuaria de Manta

de Buques Turísticos y Pasajeros

AÑO	# buques	pasajeros	tripulantes	total
1997	5	2.589		2.589
1998	5	2.545		2.545
1999	6	4.121	2.227	6.348
2000	11	9.008	4.909	13.917
2001	9	7.526	4.365	11.891
2002	12	9.660	4.806	14.466
2003	14	9.297	6.476	15.773
2004	14	9.406	5.806	15.212
2005	11	9.621	5.456	15.077
2006	9	9.691	5.383	15.074
2007	15	14.431	6.734	21.165
2008	26	22.431	12.901	35.332
2009	21	23.473	12.254	35.727
2010	19	16.114	8.582	24.696
2011	19	16.572	8.927	25.499
2012	24	20.848	10.383	31.231
2013	20	22.605	11.607	34.212
2014	21	17.990	9.840	27.830
2015	19	18.101	10.044	28.145
2016	20	18.065	10.180	28.245
2017	21	22.187	11.630	33.817

DE PASAJEROS ARRIBADOS AL PUERTO DE MANTA



FUENTE: SOEP CTS TIDE
ESTADÍSTICO, APM



APM, el corazón de Manta.



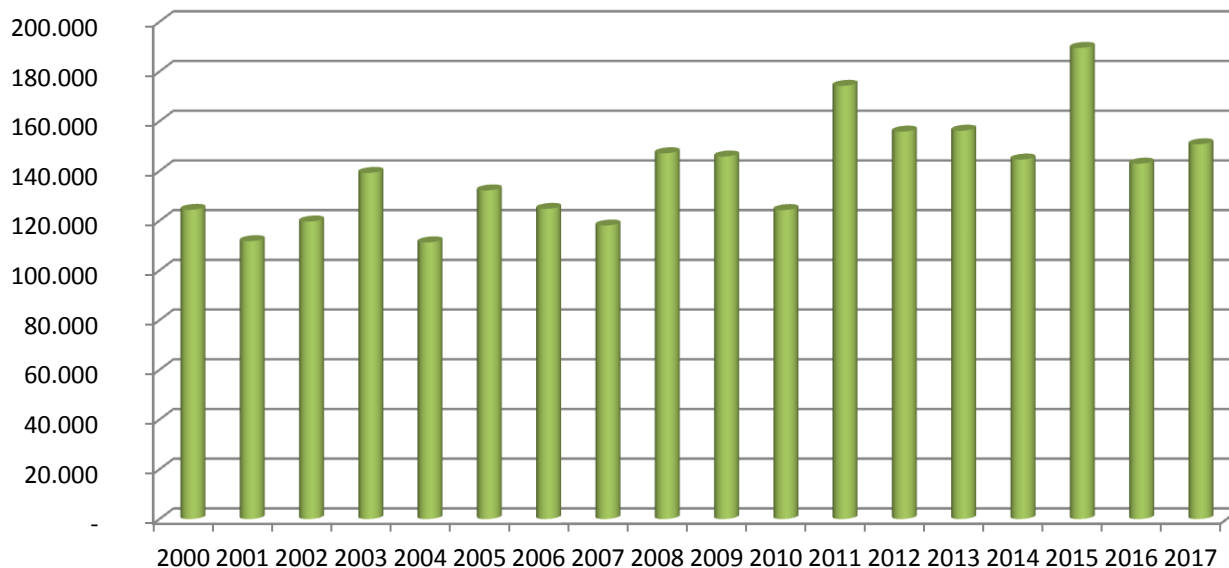
Autoridad
Portuaria
de Manta

Autoridad Portuaria de Manta

PESCA NACIONAL DESEMBARCADA

Año	toneladas
2000	124.389
2001	111.803
2002	119.688
2003	139.247
2004	111.302
2005	132.197
2006	124.792
2007	118.084
2008	147.146
2009	145.845
2010	124.299
2011	174.290
2012	155.857
2013	156.237
2014	144.618
2015	189.545
2016	142.973
2017	150.766

PESCA NACIONAL (ton)



FUENTE: SOEP CTS TIDE
ESTADÍSTICO, APM



APM, el corazón de Manta.